

How to Build a Community-Centered Organization

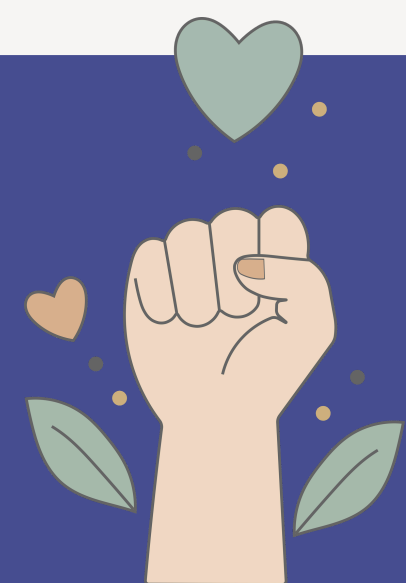


Build Trust

Encourage open communication, reduce excessive monitoring, and promote psychological safety.

Empower Employees

Encourage autonomy by minimizing micromanagement and actively involving employees in the decision-making process.



Promote Fairness

Implement transparent evaluation systems that avoid political influence and guarantee equity and consistency.

Foster Collaboration

Promote collaboration, celebrate team achievements, and enhance interpersonal connections.



Lead Ethically

Demonstrate respectful and supportive behaviors, actively discourage toxic practices, and place a strong emphasis on employee well-being.



Create a Supportive Culture

Prioritize fostering care, respect, and inclusivity while promptly addressing toxic behaviors to promote positive norms and values.

